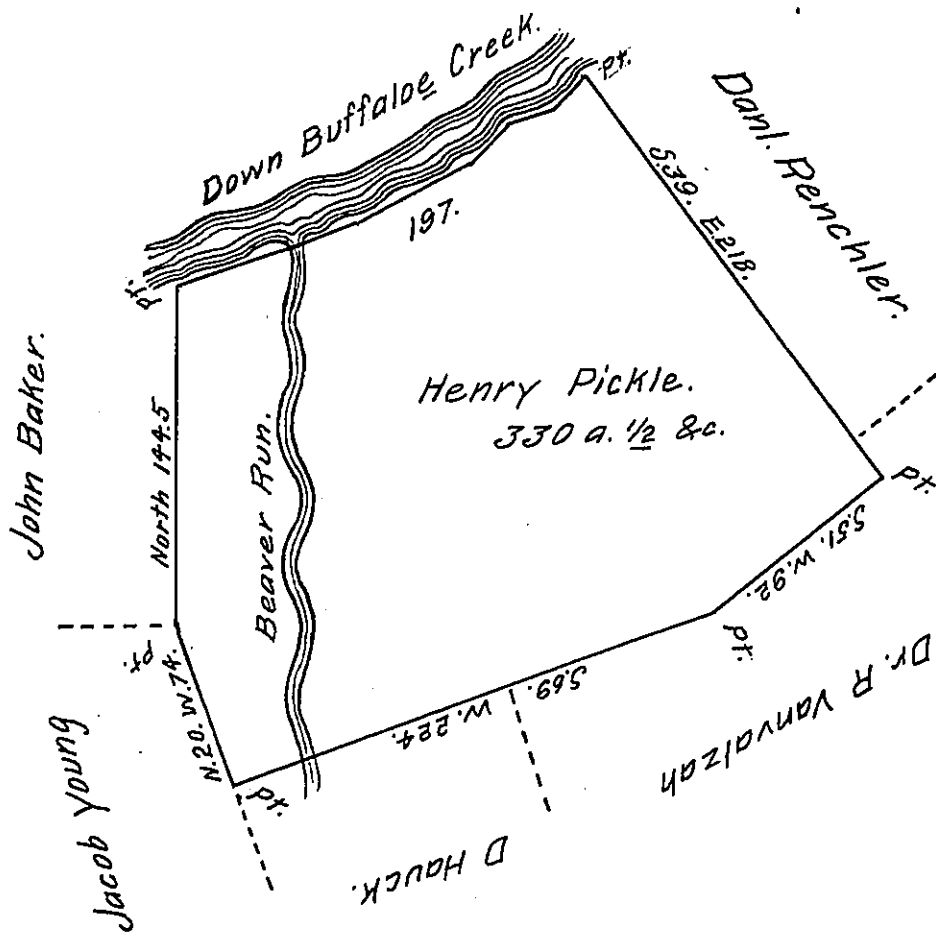


Cor & Dist. down
the creek.
N. 70. E. 76.
N. 60. E. 58.
N. 43. E. 24.
N. 76. E. 18.
N. 39. E 21.
197. pr.



Situate in Buffaloe township Union [late Berks] County County. Surveyed the 6th day of November 1832 by virtue of an order granted to Henry Pickle dated the 3d. day of April, 1769. No. 2770. Containing three hundred and thirty acres with the usual allowance of six per cent &c.

Note. The same tract of land was surveyed the 5th. day of August 1769. for Henry Seess in pursuance of his order dated the 3d. day of April 1769. No. 341. And now owned and occupied by John Bechtel in right of the said Henry Seess.

To Jacob Spangler Esq. pr. Jno. Hayes, Con.
Surveyor General Penna.

IN TESTIMONY that the above is a copy of the original remaining on file in the Department of Internal Affairs of Pennsylvania, made conformably to an Act of Assembly approved the 16th day of February, 1833, I have hereunto set my Hand and caused the Seal of said Department to be affixed at Harrisburg, this eighth day of August 1908.

Henry Hoover
Secretary of Internal Affairs.